



Functional website
<http://stateofthebalticsea.helcom.fi/>

The image displays a collage of 15 screenshots from the 'State of the Baltic Sea' website, illustrating various data visualizations and navigation elements. The screenshots are arranged in a grid-like fashion, with some overlapping. The top row shows the main navigation bar and the 'Biodiversity and food webs' section. The middle row shows the 'Estimation' section with a map of the Baltic Sea and a table of data. The bottom row shows the 'Results by core indicators' section with four circular charts. The right side of the collage shows a sidebar with a search bar and a list of links.

Website style guide

Home / Pressures facing the sea

Heading 1 - bold - 36pt

Heading 2 - regular - 28 pt

Heading 3 - bold - 22 pt

Heading 4 - bold - 18 pt

Paragraph font size is 14pt, and line height 30 pt, accompanied by increasing severity of symptoms in the ecosystem (Larsson et al., 1985, Bonsdorff et al., 1997). Early symptoms of eutrophication are increases in primary production expressed through increased chlorophyll-a concentrations in the water column or growth of opportunistic filamentous algae, changes in the metabolism of organisms and a subsequent increased deposition of organic material leading to increased

Hendrerit netus senectus sed commodo felis suscipit eleifend himenaeos donec fames parturient cum curabitur netus tempus. Condimentum a natoque nullam sapien metus parturient a suscipit velit primis a augue parturient massa lectus parturient rhoncus etiam maecenas fermentum a fringilla posuere parturient ornare platea a.

- [References](#)
- [Interactive core indicator reports on the HELCOM web site](#) 
- [Integrated assessment of eutrophication \(PDF, 657 KB\)](#)
- [Pollution Load Compilation \(PDF, 657 KB\)](#)

CAPITALIZED LINK STYLE REGULAR 14PT >



Regular 16pt (718 KB)

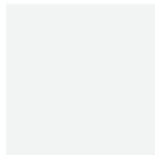
Colors



#005d8b



#007bb5



#f2f4f4



#333333



#39b7ab

Examples of wireframe design documentation

Common elements: Page contents

1. Breadcrumb (note: ends with dash, so that page title forms part of breadcrumb)
2. Expander elements (similar text style as H3)
3. "Go deeper" elements
 - Contains downloads and links – use consistent colour, perhaps icon
 - Normally at the end of content or expander section; can also be at the end of the page
4. "Side content box" elements
 - Independent compared to the rest of the text: examples, details, explanations, related information...
 - Opens as lightbox – needs to look interactive
 - Lightbox may contain images, captions...



Page templates: Subpage

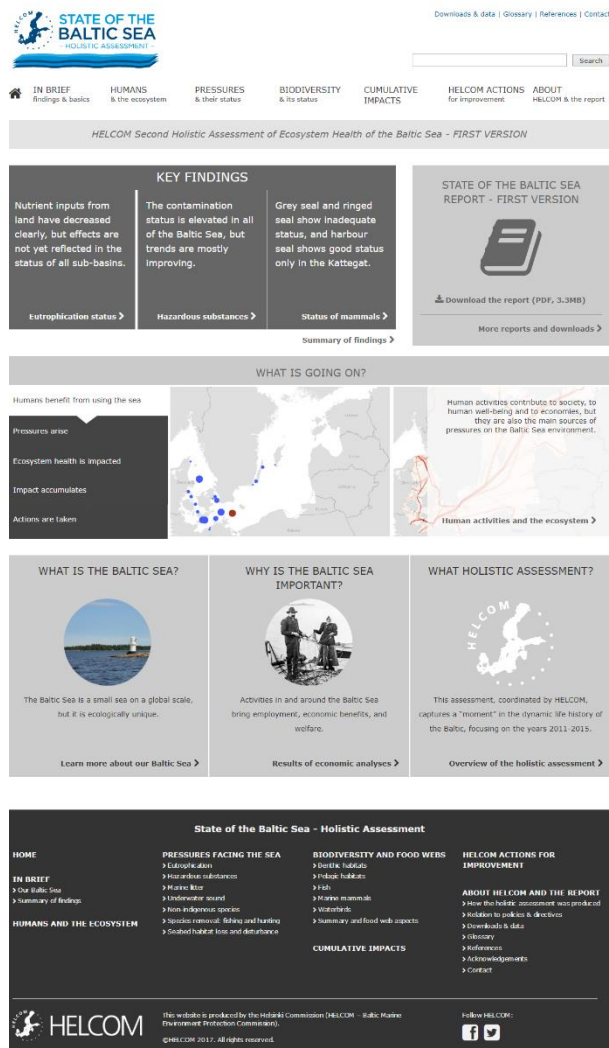
1. Summary area (paragraph or individual highlights)
2. Right sidebar "content list" with anchor links to H2:s within page (can be floating = follows as the user scrolls down? [example](#))
3. Some pages will have box with PDF download + link to downloads page (placeholder until report is ready)
4. Content area
5. Data sources and details
6. Contacts
7. One or two lists of links to related pages



Interactive wireframe design

<https://dijvsj6.axshare.com/home2.html> (password: *holastwo*)

Wireframe design of front page



Examples of concept documentation

User groups/needs overview

- Mainly aimed at **professional users**
 - People dealing with national/local marine environmental matters
 - People who work in the interface of science and policy or society
 - Marine researchers
- Also content for more **general public**
- Most important use situations **almost entirely desktop/laptop**: mobile considerations should not act as limiters



On each subpage in results section

Summary, 3–5 sentences

Brief presentation

- Why is this important?
- What does the reported state mean?
- What are the issues?

Content

- Can be long page with expandable sections?
- Dynamic maps, graphs, tables + download function

Horizontal links

- Related pages
- "Up next"

Vertical links

- Sources, reports, background info
- Working groups (& workspaces?)
- Supplementary material, fact sheets, core indicators

