

Ghost nets (DFG) in the Baltic Sea

Ann-Marie Camper



SEA BIRDS

Sea birds can become entangled in nets floating close to the surface or deployed in shallow water.

BOAT ENGINE

Lost fishing gear can get entangled in propellers and cause damage.

GHOST NETS

Ghost nets can in certain circumstances continue to fish for decades. Aside from fish, larger mammals may be trapped.

MICROPLASTICS

Ghost nets degrade into microplastics which enter the food chain and cause harm to sea life.

DIVERS

Wrecks covered
fishing gear

The problem





Caused by..



A solution



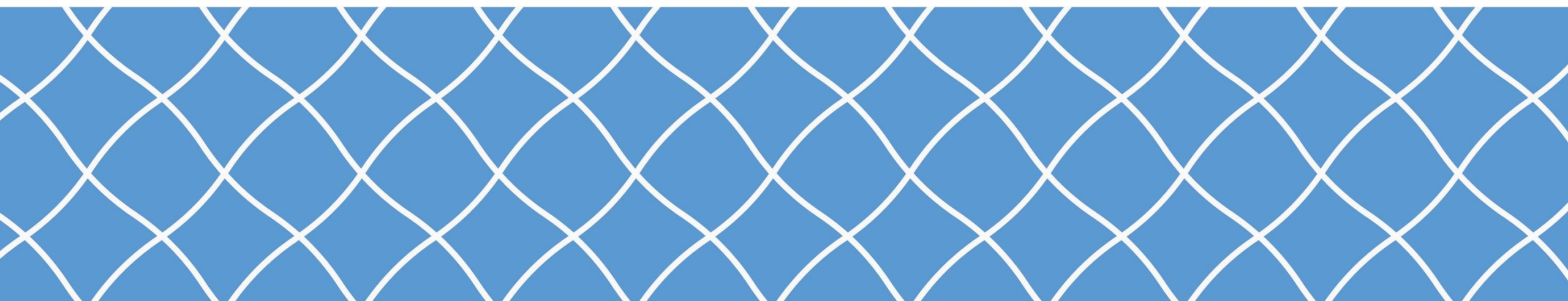
MARELITT Baltic

*Reducing the impact of marine litter in the
form of derelict fishing gear in the Baltic Sea*

Winner of 2017



2016-2019



8 partners

Lead: Municipality of Simrishamn



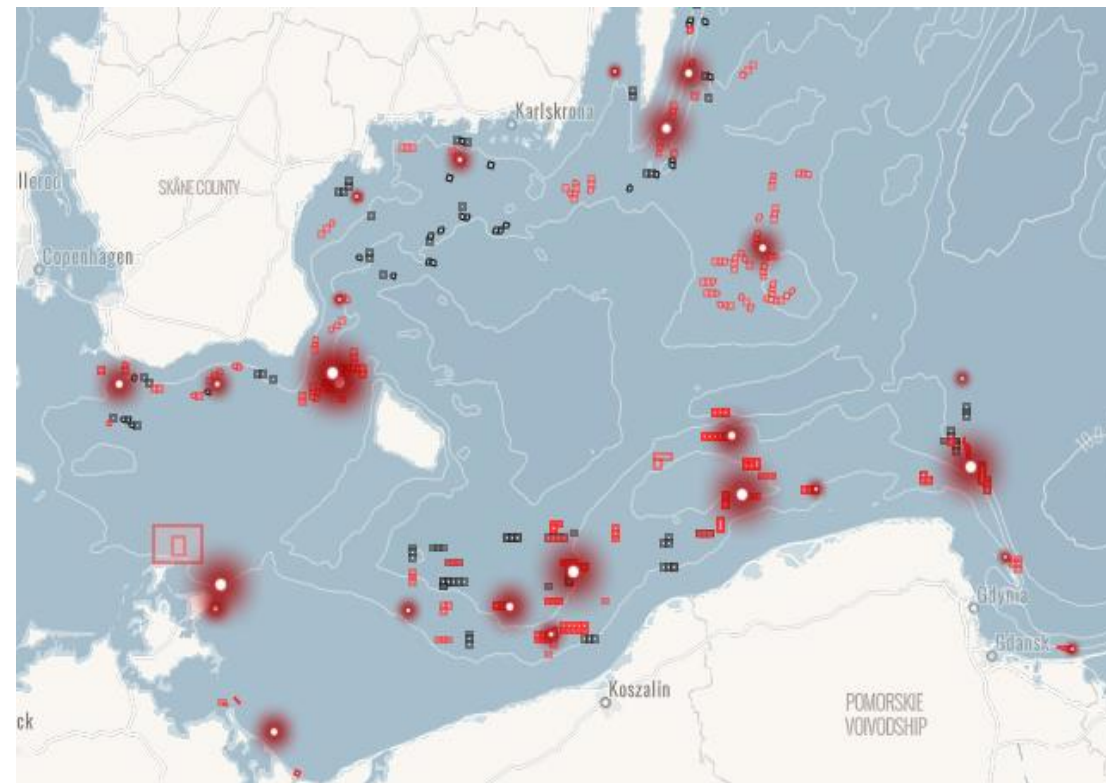
Why a solution?



It covers the entire process



Mapping "designation of DFG host areas"



Retrieval

How to recover the
located nets



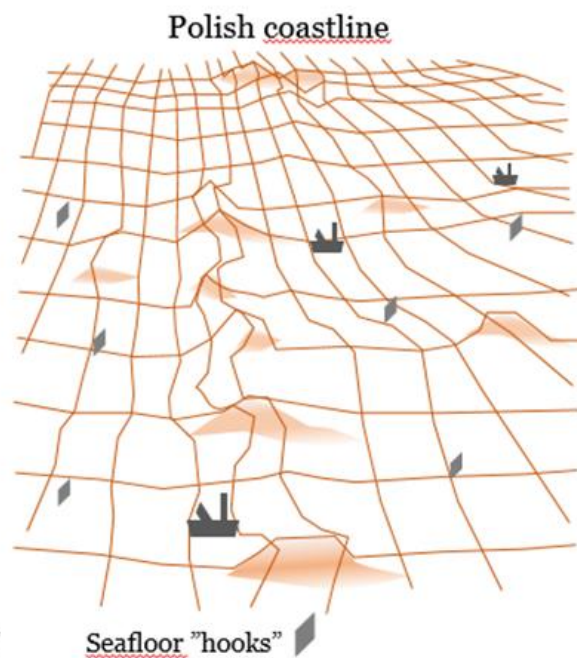
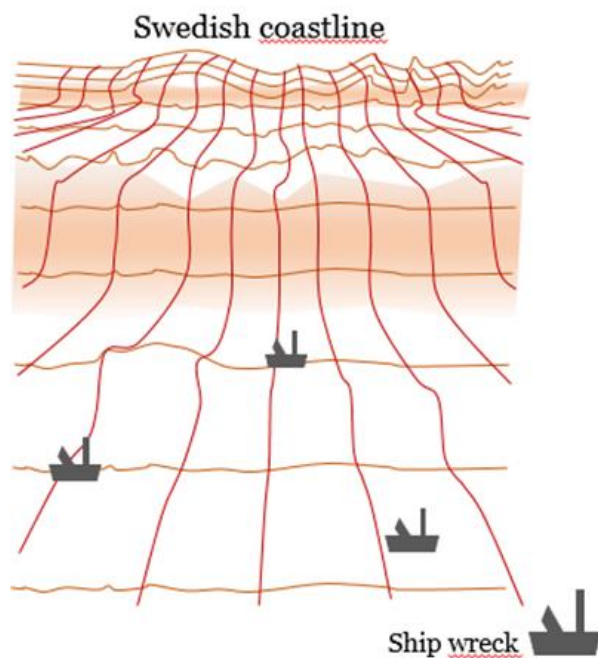
Recycling

Waste
management
solutions



Prevention

How to reduce
gear loss during
fishing





A roadmap and a guide



WW


Post MARELITT Baltic

The background of the slide is a close-up photograph of a tree trunk, showing the rough, textured bark in warm, golden-brown tones. On the right side, there is a semi-transparent light blue circle. Inside this circle, the text "Technical development finding the DFG" is written in a black, sans-serif font. The word "finding" is underlined with a short horizontal line.


Technical
development
finding the DFG

Cleaning hot-spot areas

Bornholm

A map of the Baltic Sea region, showing parts of Sweden, Finland, and Poland. The map includes labels for 'Karliskrona', 'Malmö', and 'Göteborg'. A large circular overlay is positioned on the left side of the map, containing the text 'Cost-efficient cleaning in non hot-spot areas'. The map also features various colored markers (green, red, black) and a grid of latitude and longitude lines.

**Cost-efficient cleaning
in non hot-spot areas**

An underwater photograph of a rocky seabed covered in various marine life, including seaweed and coral. A semi-transparent white circle is overlaid on the right side of the image, containing the text 'Spreading the knowledge' and a horizontal line.

Spreading the
knowledge

Three recommendations to BSAP!



Mapping
"designation of DFG host
areas"

Retrieval
How to recover
the located nets

Recycling
Waste
management
solutions

Prevention
How to reduce
gear loss during
fishing

Now we have the knowledge

1. Acknowledge and prioritize

actions to mitigate the problem





2. Use



A map of the Baltic Sea region, including parts of Sweden, Finland, and Denmark. A large grid of small squares is overlaid on the landmasses. Some squares are colored red, green, or yellow, indicating data points. The text "3. HELCOM" is prominently displayed in the center, with "Host the map!" below it. The map shows the coastline of Sweden to the north and west, Finland to the east, and Denmark to the south. Major cities like Malmö, Karlskrona, and Kalmar are labeled. The sea is shown in blue, and land in light brown. A small icon in the top right corner shows a stack of layers, suggesting a multi-layered map interface.

3. HELCOM

Host the map!